

Contact Details

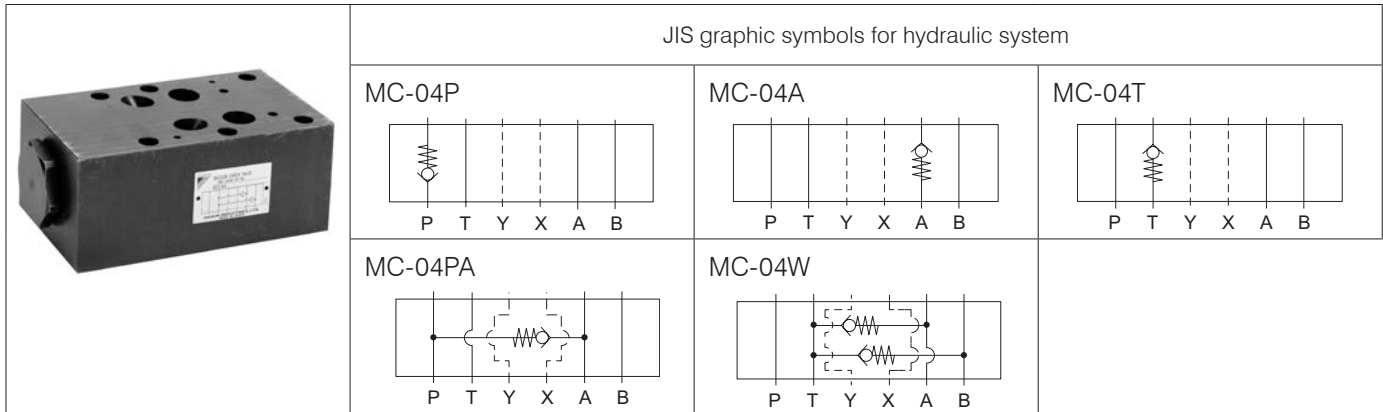
Before using the product, please check the guide pages at the front of this catalog.

Internet

<https://www.daikinpmc.com/en/>

For latest information, PDF catalogs and operation manuals

04 Series Stacking Type Check Valves



Nomenclature

※ - MC - 04 ※※ - ※※ - 10

1 2 3 4 5 6

1 Applicable fluid code

No designation: Petroleum-based hydraulic fluid, water-glycol hydraulic fluid

F: Phosphate ester hydraulic fluid

2 Model No.

MC: Modular stacking type check valve

3 Nominal diameter

04: ½

4 Control port

P: Port P

A: Port A

T: Port T

PA: A → P

W: Port A/B (vacuum check valve)

5 Cracking pressure code

01: 0.01 MPa {0.1 kgf/cm²}

04: 0.04 MPa {0.4 kgf/cm²}

10: 0.1 MPa {1 kgf/cm²}

20: 0.2 MPa {2 kgf/cm²}

35: 0.35 MPa {3.5 kgf/cm²}

50: 0.5 MPa {5 kgf/cm²}

60: 0.6 MPa {6 kgf/cm²}

6 Design No.

(The design No. is subject to change)

Specifications

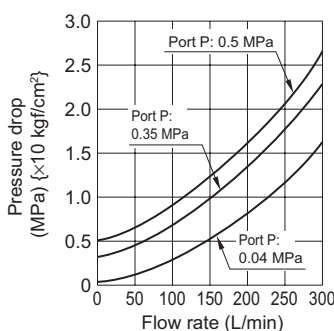
Model code	Maximum operating pressure MPa {kgf/cm ² }	Maximum flow rate L/min	Cracking pressure MPa {kgf/cm ² }	Mass kg
MC-04W -01-10	35 {350}	300	0.01 {0.1}	(1) 4.5 (2) 6
MC-04※※-04-10			0.04 {0.4}	
MC-04※※-10-10			0.1 {1 }	
MC-04※※-20-10			0.2 {2 }	
MC-04※※-35-10			0.35 {3.5}	
MC-04※※-50-10			0.5 {5 }	
MC-04※※-60-10			0.6 {6 }	

Note: Mass (1) Control port: P, A, PA
(2) Control port: T, W

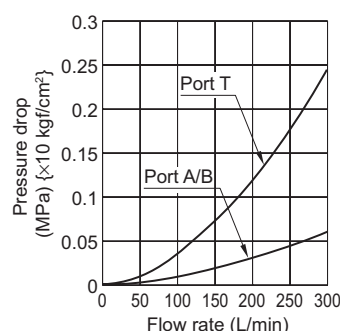
Performance curves (viscosity: 32 mm²/s {cSt})

Pressure drop characteristics

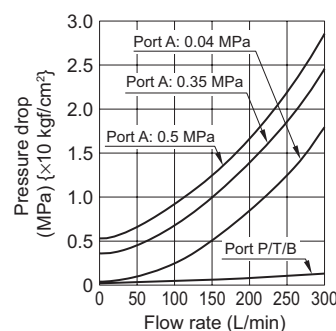
MC-04P



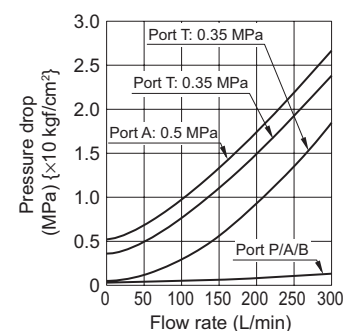
MC-04P



MC-04A



MC-04T



Contact Details

Before using the product, please check the guide pages at the front of this catalog.

Internet

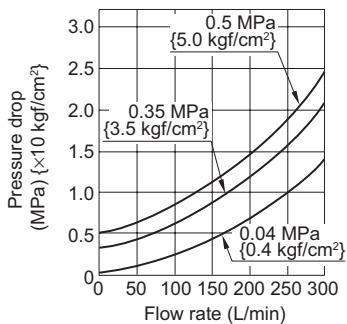
<https://www.daikinpmc.com/en/>

For latest information, PDF catalogs and operation manuals

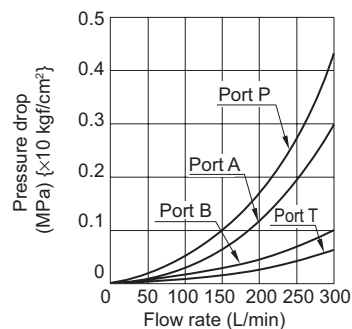
Performance curves (viscosity: 46 mm²/s {cSt})

Pressure drop characteristics

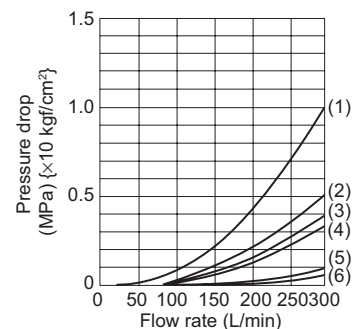
MC-04PA (Flow A → P)



MC-04PA



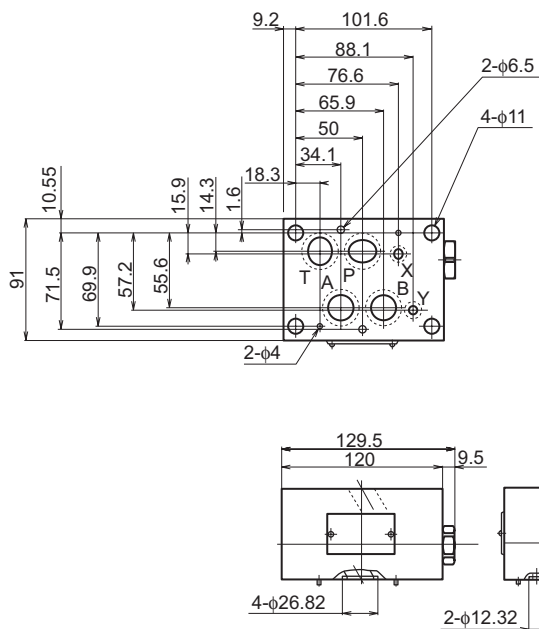
MC-04W



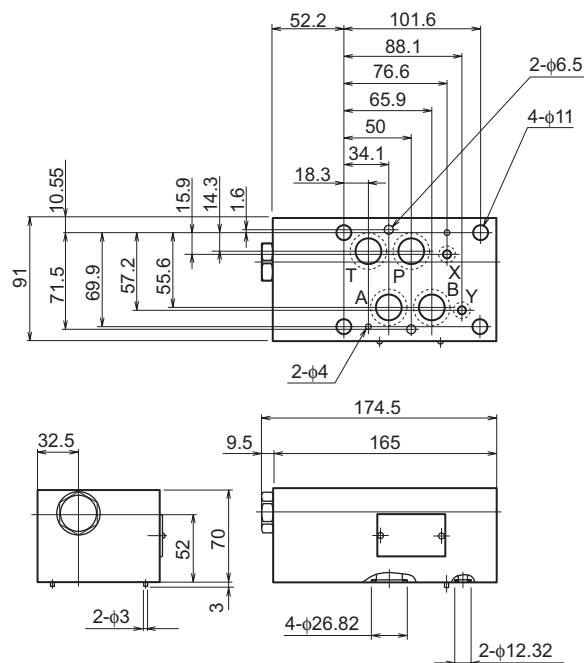
- (1) Port T → A flow
- (2) Port T → B flow
- (3) Port T
- (4) Port A
- (5) Port B
- (6) Port P

External dimension diagram

MC-04P
MC-04A
MC-04PA



MC-04T



Model code	A	B
MC-04P	28	30.5
MC-04A	44	45.5
MC-04PA	36	45.5

Contact Details

Before using the product, please check the guide pages at the front of this catalog.

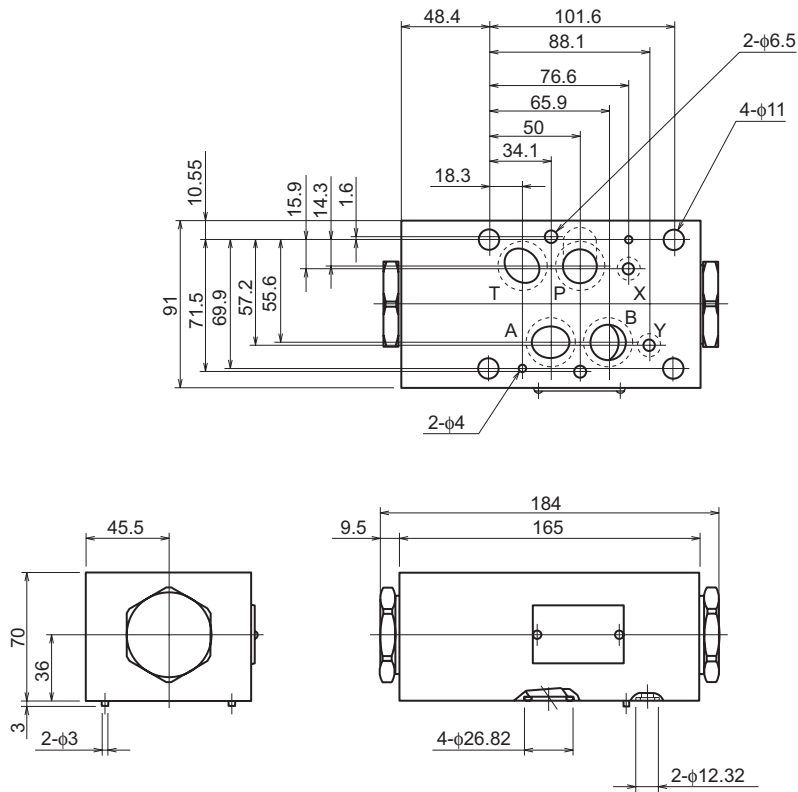
Internet

<https://www.daikinpmc.com/en/>

For latest information, PDF catalogs and operation manuals

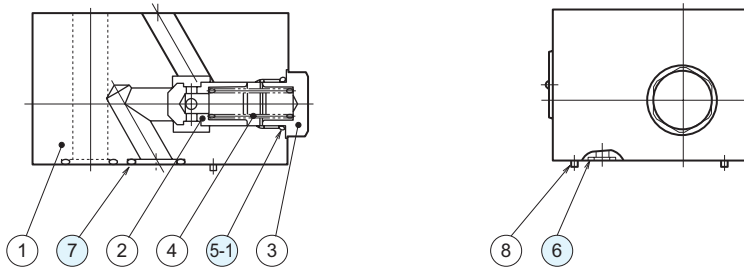
External dimension diagram

MC-04W

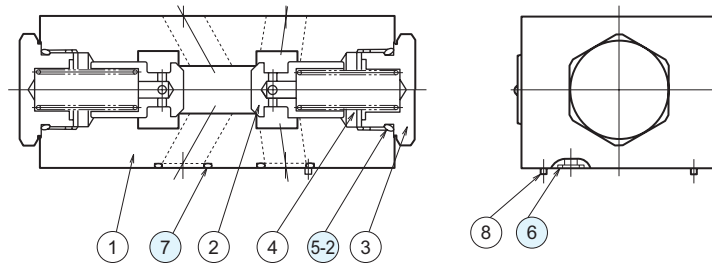


Sectional structural diagram

MC-04P



MC-04W



Sealing part table

Part No.	Name	Quantity					Part specifications
		MC-04P	MC-04A	MC-04T	MC-04PA	MC-04W	
5-1	O-ring	1	1	1	1	—	JIS B 2401 1BP20
5-2	O-ring	—	—	—	—	2	JIS B 2401 1BP32
6	O-ring	2	2	2	2	2	AS568-012 (NBR, HS90)
7	O-ring	4	4	4	4	4	AS568-118 (NBR, HS90)